

FreeGo2-Stellarium

Telescope control program usage

Manual Version 1.0

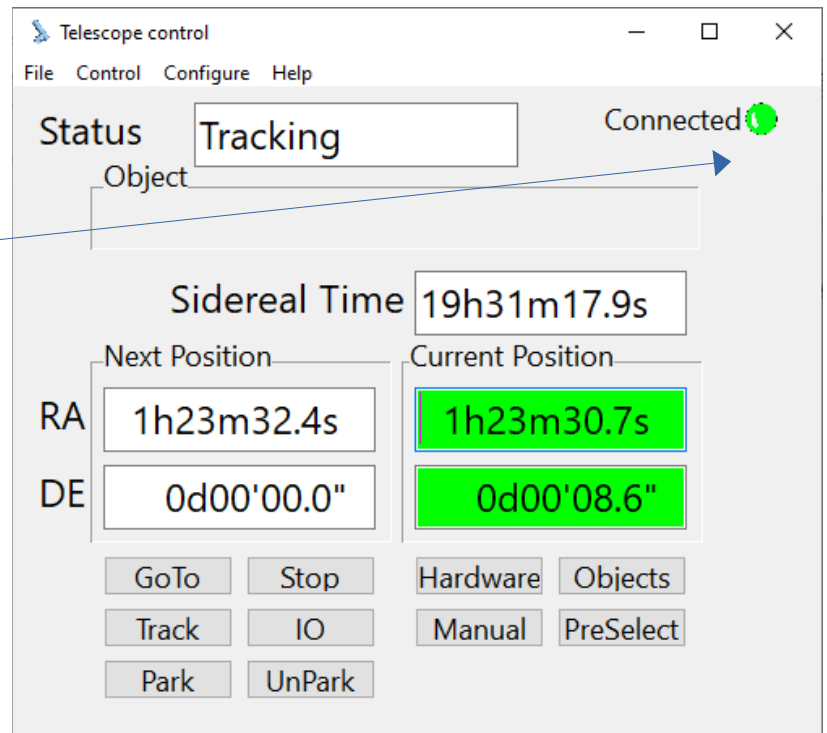


Using Freego2 with Stellarium

Start freego2 and Stellarium. Order is not important.

If everything is set up correctly there is a connection between Freego2 and Stellarium.

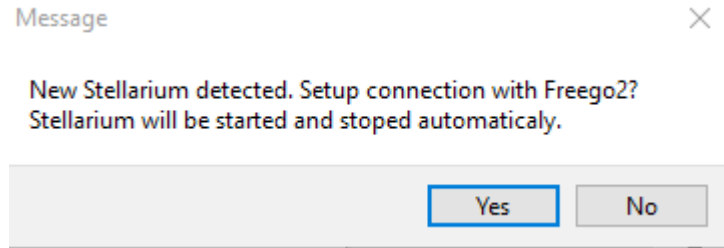
This is indicated by the lighting (light green) LED



When Freego2 and Stellarium are connected, a circle is shown in stellar space with the text "Freego2". This indicates the position of the telescope. Within Stellarium, an object can now be selected by clicking on it with the mouse. Pressing CTRL-1 key combination will forward the coordinate to Freego2 and the telescope will move to the chosen coordinate.

When Freego2 is started, it checks to see if Stellarium is installed.

If a new installation is recognized Freego2 will pop-up asking if FreeGo2 should be linked to Stellarium. If "Yes" is chosen FreeGo2 will add a telescope connection to Stellarium. For this, Stellarium will be started and closed again.



When this is done, a pop-up window is displayed that displays the key (e.g., Ctrl-1) combination to send the object coordinates to Freego2 within Stellarium.

